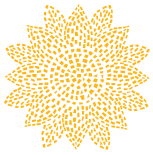


POOL RESIDENCES



AT SUNFLOWER BEACH





SUNFLOWER

— BEACH —

RESORT & RESIDENCES

THE BEACH CLUB



RESORT POOLS & POOLSIDE GRILL

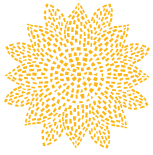
- Large family pool with shallow beach entry
- Architecturally-inspired poolside cabanas
- Turtle's seasonal poolside bar and grill
- Covered pavilion for live music, events, & kid's club
- Separate adult pool with shaded lounge areas and cascading fountain wall



TURTLE'S
POOLSIDE GRILL



Marketing material is preliminary in nature and subject to change.

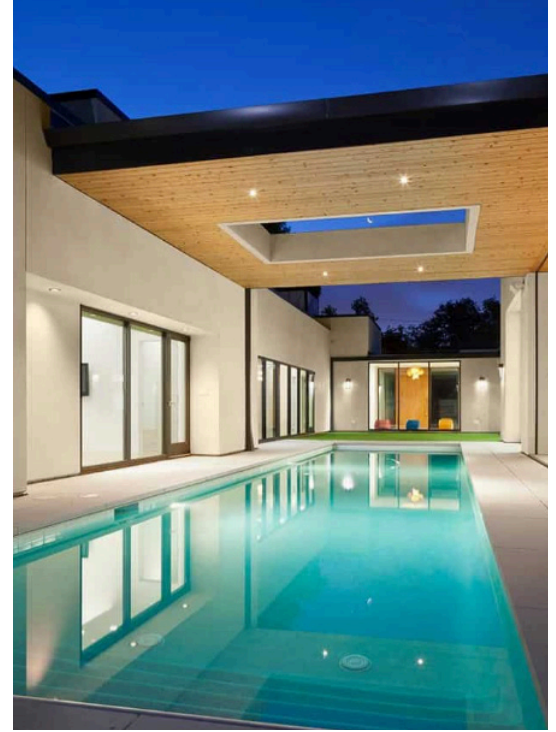


SUNFLOWER

— BEACH —

RESORT & RESIDENCES

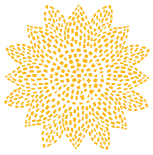
PROJECT ARCHITECT



—
JAY
COR
DER
ARC
HIT
ECT
—

Jay Corder and his team have spent the last decade designing contemporary, high-end custom residential architecture. The team is likewise poised to handle contemporary commercial projects focusing on hospitality, multi-family, and amenity designs.

Marketing material is preliminary in nature and subject to change.



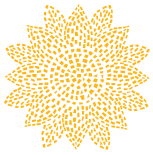
*Finishes subject to change

Recognizing that architecture and interior design are fully intertwined, Sunflower Beach's Pool Residences are thoughtfully designed to allow for its interior materials to be appreciated.

INTERIOR DESIGN FEATURES

KITCHEN

- Bosch stainless steel kitchen appliances with gas range
- Contemporary slab cabinetry with integrated pantries
- Built-in wet bar with beverage center



SUNFLOWER

— BEACH —

RESORT & RESIDENCES

ARCHITECTURE

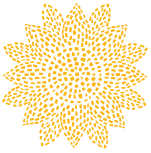


LIVING

- 12' to 16' wide window systems with sliding doors open seamlessly on to large covered sun terraces
- 9' high ceilings with LED surface-mount lighting
- Wide luxury plank vinyl flooring throughout residences (no carpet)
- 8' painted white entry suite door & 7' interior passage doors
- 52" white 3-blade Roto ceiling fans
- Wireless NEST thermostats & keyless programmable locks for owners & guests
- Private owner's closets & lock-off closets for vacation rentals

BATH

- Walk-in master showers with floor-to-ceiling wall tile
- Pfister angular modern chrome bath accessories
- Contemporary glass vanity lighting



SUNFLOWER

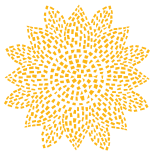
— BEACH —

RESORT & RESIDENCES

LOCATION



Marketing material is preliminary in nature and subject to change.



SUNFLOWER

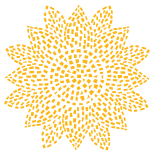
— BEACH —

RESORT & RESIDENCES

COMMUNITY



Marketing material is preliminary in nature and subject to change.



SUNFLOWER

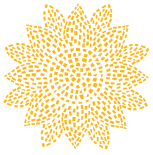
— BEACH —

RESORT & RESIDENCES

MASTERPLAN SITE MAP



Marketing material is preliminary in nature and subject to change.

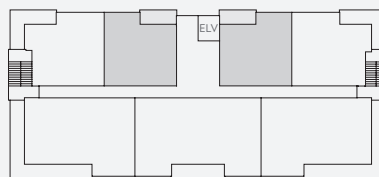
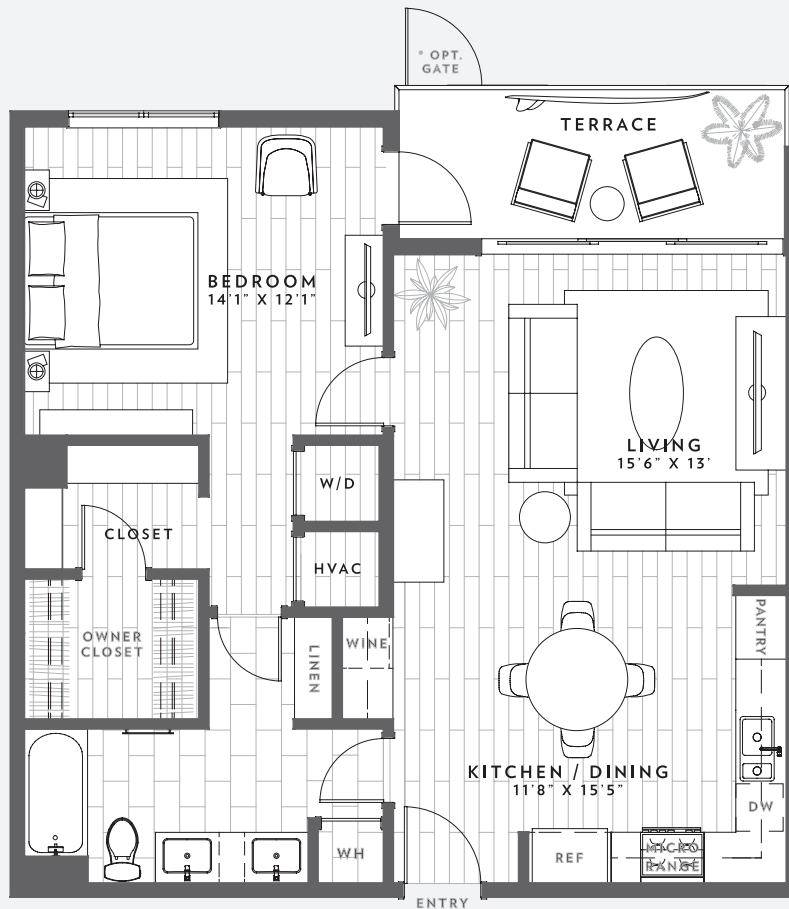


1 BED • 1 BATH

(INTERIOR SUITE)

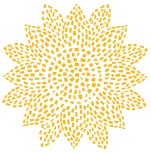
INTERIOR: 817 SF | TERRACE: 95 SF | TOTAL: 912 SF

* TERRACE GATE ON FIRST FLOOR



SUNFLOWER PARK



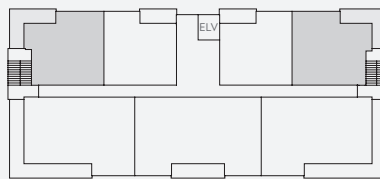
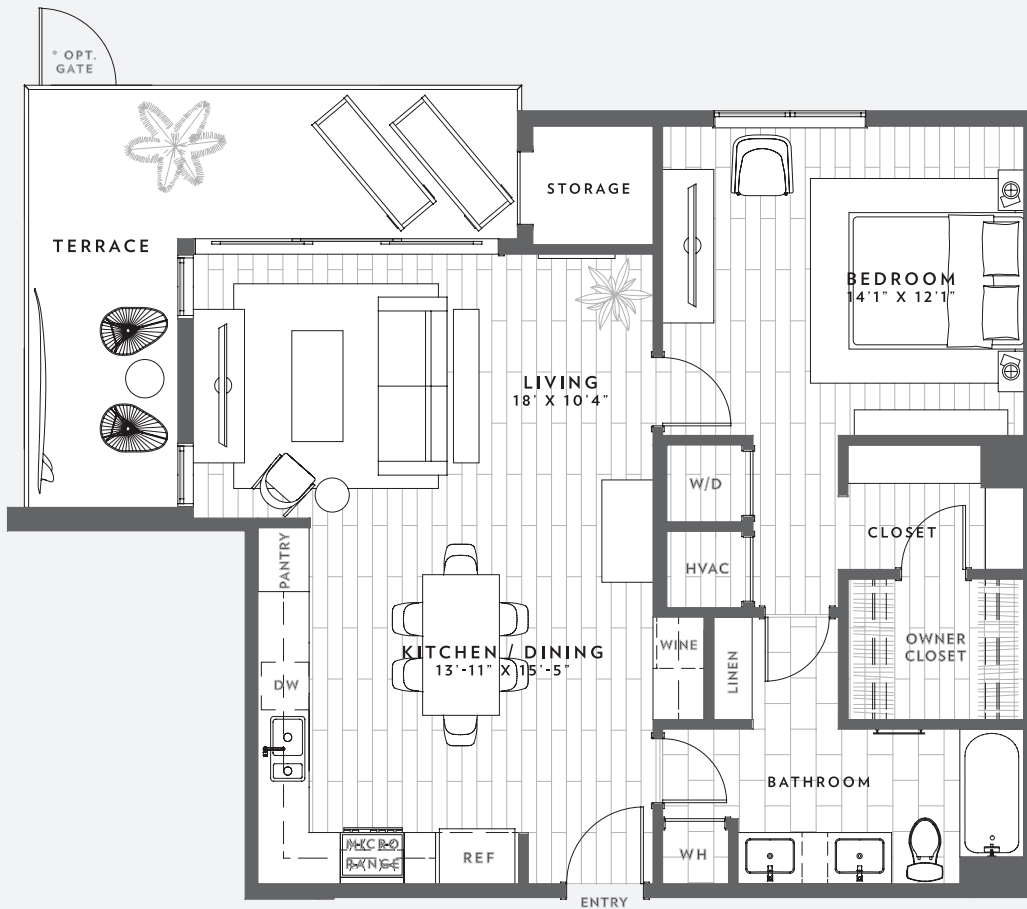


1 BED • 1 BATH

(CORNER SUITE)

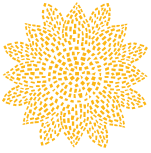
INTERIOR: 830 SF | TERRACE: 184 SF | TOTAL: 1,014 SF

* TERRACE GATE ON FIRST FLOOR



SUNFLOWER PARK

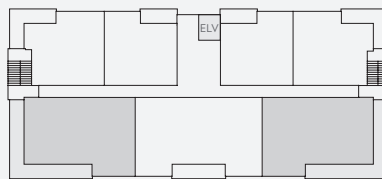
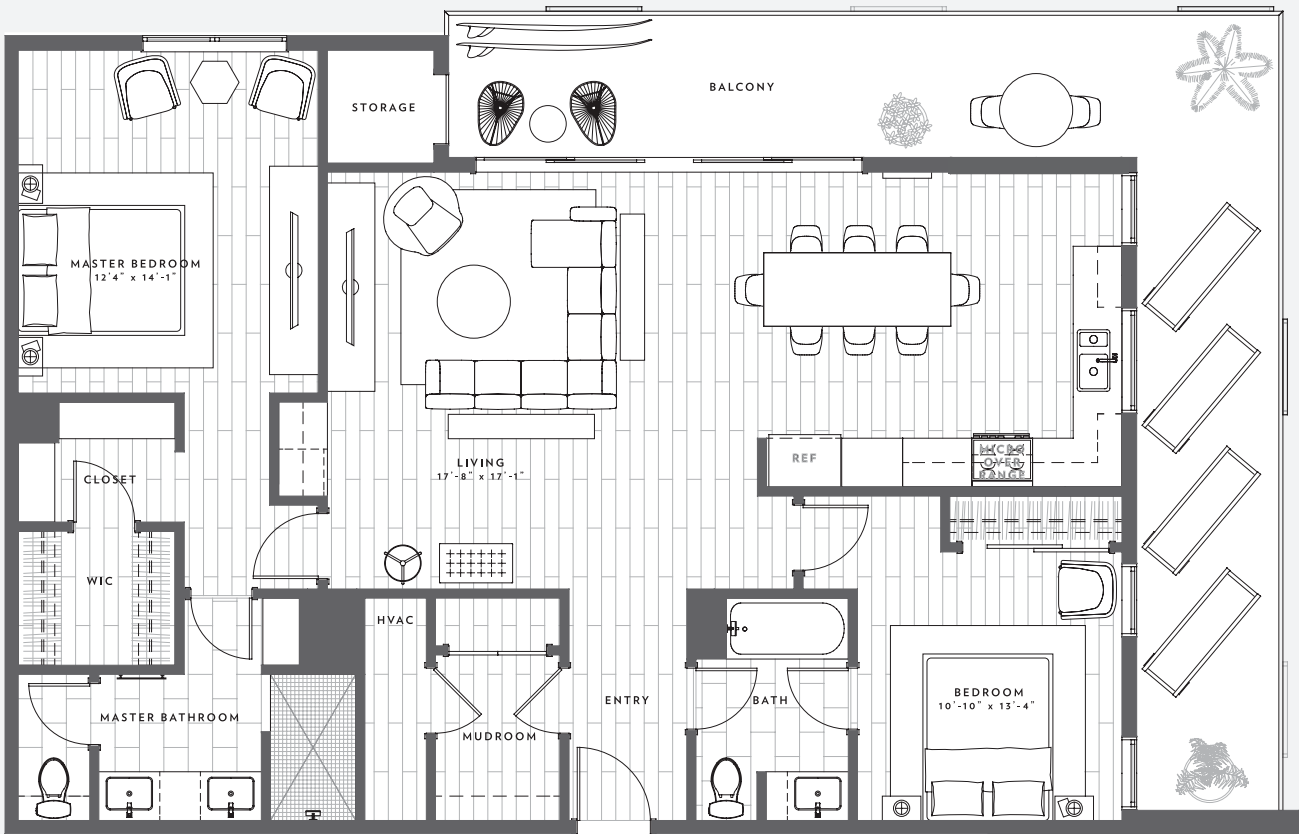




2 BED • 2 BATH

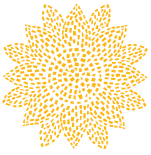
INTERIOR: 1,277 SF | TERRACE: 375 SF | TOTAL: 1,652 SF

* TERRACE GATE ON FIRST FLOOR



SUNFLOWER PARK

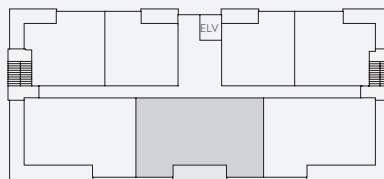
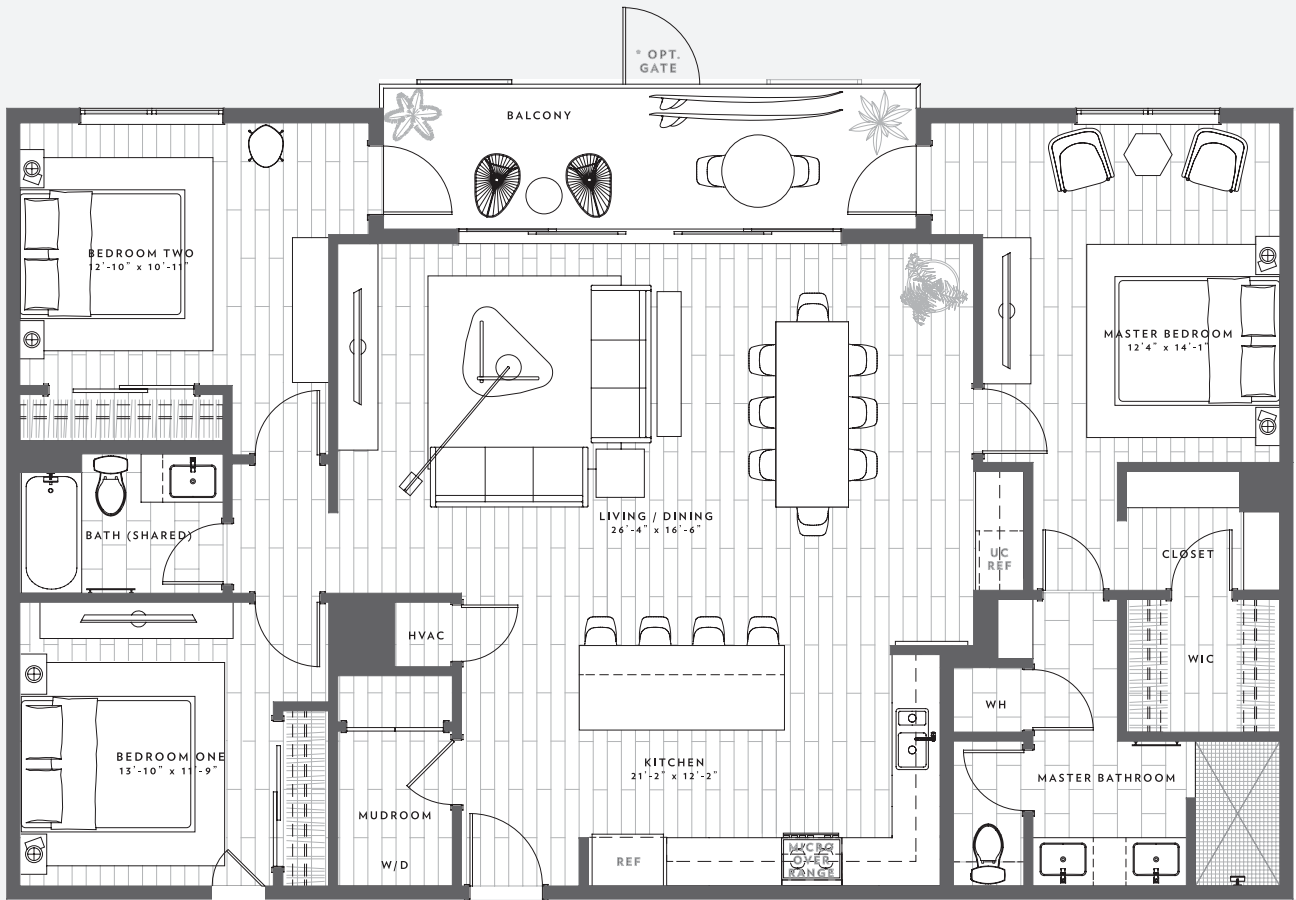




3 BED • 2 BATH

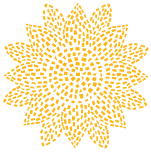
INTERIOR: 1,533 SF | TERRACE: 136 SF | TOTAL: 1,689 SF

* TERRACE GATE ON FIRST FLOOR



SUNFLOWER PARK





SUNFLOWER

— BEACH —

RESORT & RESIDENCES

APPLIANCES



BENCHMARK 30" GAS SLIDE-IN STAINLESS STEEL RANGE

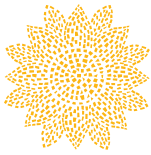
- 20,000 BTU Center Burner: powerful burner delivers quickly for searing, boiling and more
- Continuous Cast Iron Grates to easily slide pots and pans
- Warming Drawer for convenient storage
- Convenient 2 Hour Self Cleaning



300 SERIES 30" OVER-THE- RANGE MICROWAVE

- 1,000 Cooking Watts
- Easy to read LCD touchscreen
- Reheat feature provides 3 quick preset settings based on serving size
- 1.6 cuft. interior capacity

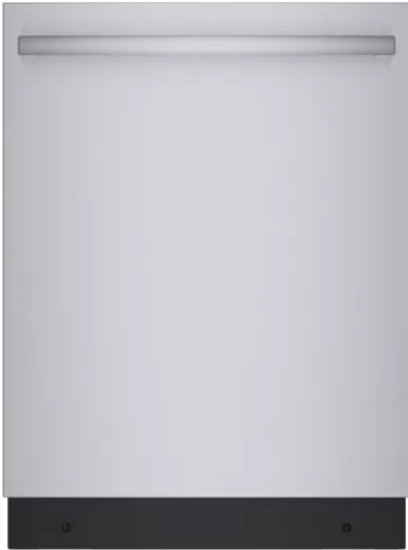
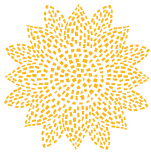
Marketing material is preliminary in nature and subject to change. The Developer reserves the right to make substitution based on availability provided that the quality of the substitute is equal to or better than the original selection.



500 SERIES 36" FRENCH DOOR
BOTTOM MOUNT REFRIGERATOR

- QuickIcePro System for fast ice
- A convenient door ajar notification
- Wide gallon door bins
- Control temperature and monitor with Home Connect
- Organized Freezer Drawers for optimal storage
- Easy to clean stainless steel exterior
- Filtered External Ice & Water





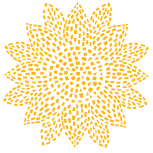
800 SERIES 24" STAINLESS STEEL DISHWASHER

- Added leak protection with 24/7 AquaStop plus
- Flexible Silverware Basket for various utensils
- 24h Delay Start Timer
- Water Softener provides spot-free dishes
- The ultimate dry with CrystalDry
- 42 dBA - the quietest dishwasher in the U.S.
- Loading flexibility with a 3rd rack dishwasher



AVALLON STAINLESS STEEL 24" BUILT-IN BEVERAGE CENTER

- Low temperatures: as low as 34°F
- Even compressor based cooling
- Blue, amber, and white LED lighting
- Added security: keep your collection safe under lock and key



SUNFLOWER

— BEACH —

RESORT & RESIDENCES

APPLIANCES
UPGRADE OPTIONS

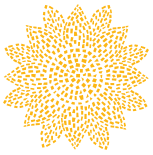


**800 SERIES 36" FRENCH
DOOR BOTTOM MOUNT
REFRIGERATOR**



**800 SERIES 30" STAINLESS
STEEL GAS FREESTANDING
RANGE**

Marketing material is preliminary in nature and subject to change. The Developer reserves the right to make substitution based on availability provided that the quality of the substitute is equal to or better than the original selection.



SUNFLOWER

— BEACH —

RESORT & RESIDENCES

APPLIANCES
UPGRADE OPTIONS

Whirlpool®

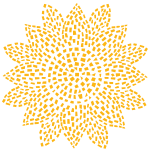


WASHER/DRYER

27" 5 Cu Ft. Electric Front Loading Washer
27" 7.4 Cu Ft. Energy Star Rated Electric Dryer

STACKED (1 & 3 BEDROOMS)
SIDE-BY-SIDE (2 BEDROOMS)

Marketing material is preliminary in nature and subject to change. The Developer reserves the right to make substitution based on availability provided that the quality of the substitute is equal to or better than the original selection.



SUNFLOWER

BEACH

RESORT & RESIDENCES

LUXURY APPOINTMENTS

KITCHEN



DELTA - TRINSIC
SINGLE HANDLE PULL-DOWN
KITCHEN FAUCET - CHROME



ELK HOME
SOPHIE 1 -LIGHT PENDANT
(3 BEDROOM ONLY)

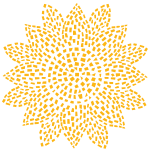


KOHLER - IRON/TONES
UNDER-MOUNT SMART DIVIDE
33" x 19" x 10"



8" MODERN SOLID BAR CABINET
PULL - POLISHED CHROME

Marketing material is preliminary in nature and subject to change. The Developer reserves the right to make substitution based on availability provided that the quality of the substitute is equal to or better than the original selection.



SUNFLOWER

BEACH

RESORT & RESIDENCES

LUXURY APPOINTMENTS

PRIMARY BATH



PFISTER - KENZO
SINGLE HOLE FAUCET WITH
CHANNEL SPOUT



KOHLER - CAXTON
UNDERMOUNT SINK



PFISTER - KENZO
RAIN HEAD SHOWER
TRIM KIT



DELTA ARZO SERIES
BATHROOM ACCESSORIES
CHROME



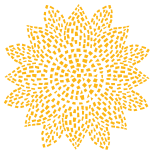
SHADES OF LIGHT
DOUBLE BULLET GLASS WALL
SCONCE- CHROME



KOHLER - STERLING
ENSEMBLE ALCOVE BATH
WITH INTEGRAL APRON

2 & 3 BR HOMES: GUEST BATH

Marketing material is preliminary in nature and subject to change. The Developer reserves the right to make substitution based on availability provided that the quality of the substitute is equal to or better than the original selection.



GUEST BATH



PFISTER - KENZO
SINGLE HOLE FAUCET WITH
CHANNEL SPOUT



SIGNATURE HARDWARE
DESTIN UNDERMOUNT SINK



PFISTER - KENZO
RAIN HEAD SHOWER/TUB
TRIM KIT



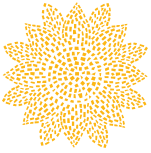
DELTA ARZO SERIES
BATHROOM ACCESSORIES
CHROME



SHADES OF LIGHT
DOUBLE BULLET GLASS WALL
SCONCE- CHROME



KOHLER HIGHLINE
COMFORT HEIGHT
TOILET



LIVING



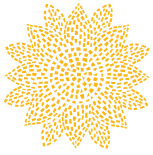
MINKA-AIRE
ROTO 52 " CEILING FAN



KWIKSET
HALIFAX MODERN LEVER
CHROME



HONEYWELL HOME
SMART THERMOSTAT



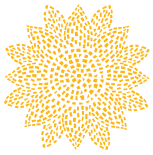
ENTRY



SHADES OF LIGHT
SOHO LOFT SCONCE
CHROME

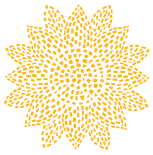


ORACODE
480 DEADBOLT
ENTRY LOCK



*2 & 3 bedrooms only

Marketing material is preliminary in nature and subject to change. The Developer reserves the right to make substitution based on availability provided that the quality of the substitute is equal to or better than the original selection.



SUNFLOWER

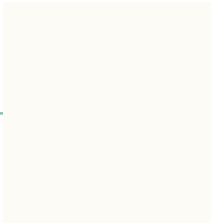


BEACH

RESORT & RESIDENCES


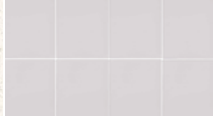

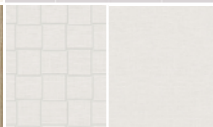
FINISH OPTION
SAND







KITCHEN

			BACKSPLASH
CABINET	_____		COUNTER

PRIMARY BATH

			WALL TILE
COUNTER	_____		SHOWER PAN* & MAIN FLOOR TILE
CABINET	_____		

GUEST BATH

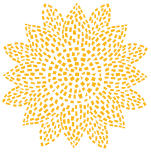
			WALL TILE
COUNTER	_____		FLOOR TILE
CABINET	_____		

LIVING

THROUGHOUT (NO CARPET)	_____	
---------------------------	-------	---

*2 & 3 bedrooms only

Marketing material is preliminary in nature and subject to change. The Developer reserves the right to make substitution based on availability provided that the quality of the substitute is equal to or better than the original selection.



SUNFLOWER

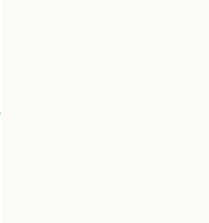
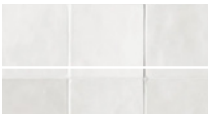

— BEACH —

RESORT & RESIDENCES





FINISH OPTION
PURIST



KITCHEN

			BACKSPLASH
CABINET	—		COUNTER


PRIMARY BATH

			WALL TILE
COUNTER	—		
			SHOWER PAN* & MAIN FLOOR TILE
CABINET	—		

GUEST BATH

			WALL TILE
COUNTER	—		
			FLOOR TILE
CABINET	—		

LIVING

THROUGHOUT (NO CARPET)	—	
---------------------------	---	---

*2 & 3 bedrooms only

Marketing material is preliminary in nature and subject to change. The Developer reserves the right to make substitution based on availability provided that the quality of the substitute is equal to or better than the original selection.